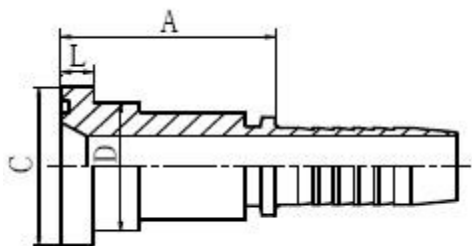


## INDEX

P/N	PAGE
87311(SAE FLANGE 3000 PSI).....	2
87341(45°SAE FLANGE 3000 PSI).....	3
87391(90°SAE FLANGE 3000 PSI).....	4
87611(SAE FLANGE 6000 PSI).....	5
87641(45°SAE FLANGE 63000 PSI).....	6
87691(90°SAE FLANGE 6000 PSI).....	7
88111(JIS FLANGE).....	8
88141(45°JIS FLANGE).....	9
88191(90°JIS FLANGE).....	10
87913 (SAE FLANGE 9000PSI ).....	11
87943 (45° SAE FLANGE 9000PSI ).....	12
87993 (90°SAE FLANGE 9000PSI ).....	13
M23911 (STRAIGHT SUPERCAT FLANGE).....	14
M23911 (45°STRAIGHT SUPERCAT FLANGE).....	15
M23911 (90°STRAIGHT SUPERCAT FLANGE).....	16
FL(SAE SPLIT FLANGE CLAMP 3000PSI).....	17
FS(SAE SPLIT FLANGE CLAMP 6000PSI).....	18



**87311**

SAE 法兰 3000 PSI

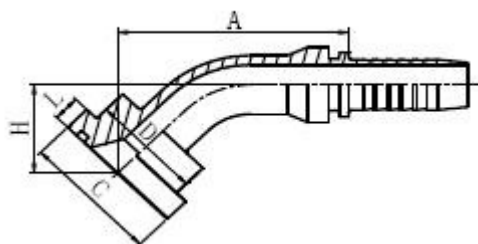
SAE FLANGE 3000 PSI

代号 P/N	法兰型号 FLANGE SIZE	软管 HOSE BORE		尺寸 DIMENSIONS			
		公称内径 DN	标号 DASH	A	C	D	L
87311-08-08	1/2"	12	08	46	30.2	24	6.73
87311-12-08	3/4"	12	08	47	38.1	32	6.73
87311-12-10	3/4"	16	10	48	38.1	32	6.73
87311-12-12	3/4"	20	12	48	38.1	32	6.73
87311-12-16	3/4"	25	16	49	38.1	32	6.73
87311-16-12	1"	20	12	51	44.4	38	8
87311-16-16	1"	25	16	52	44.4	38	8
87311-16-20	1"	32	20	53	44.4	38	8
87311-20-16	1.1/4"	25	16	57	50.8	43	8
87311-20-20	1.1/4"	32	20	58	50.8	43	8
87311-24-20	1.1/2"	32	20	68	60.3	50	8
87311-24-24	1.1/2"	40	24	68	60.3	50	8
87311-32-24	2"	40	24	70	71.4	62	9.53

87311-32-32	2"	50	32	70	71.4	62	9.53
87311-32-40	2"	64	40	75	71.4	62	9.53
87311-40-32	2.1/2"	50	32	73	84.1	74	9.53
87311-40-40	2.1/2"	64	40	76	84.1	74	9.53

Note: 1. For use with braided hoses.

2. If use with spiral hose, hose fitting series number is 87312-xx-xx



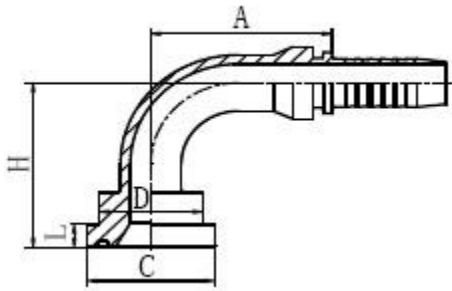
## 87341

45° SAE 法兰 3000 PSI

45° SAE FLANGE 3000 PSI

代号 P/N	法兰型号 FLANGE SIZE	软管 HOSE BORE		尺寸 DIMENSIONS				
		公称内径 DN	标号 DASH	A	C	D	H	L
87341-08-08	1/2"	12	08	58.2	30.2	24	23.3	6.73
87341-12-08	3/4"	12	08	58.9	38.1	32	24	6.73
87341-12-12	3/4"	20	12	77	38.1	32	28.9	6.73
87341-16-12	1"	20	12	77	44.4	38	28.9	8
87341-16-16	1"	25	16	85.2	44.4	38	29.7	8
87341-16-20	1"	32	20	94.5	44.4	38	33.8	8
87341-20-16	1.1/4"	25	16	85.2	50.8	43	29.7	8
87341-20-20	1.1/4"	32	20	94.5	50.8	43	33.8	8
87341-24-20	1.1/2"	32	20	95.9	60.3	50	35.2	8
87341-24-24	1.1/2"	40	24	109.9	60.3	50	39.1	8
87341-32-24	2"	40	24	109.9	71.4	62	39.1	9.53
87341-32-32	2"	50	32	129.3	71.4	62	46.3	9.53

Note: 1. For use with braided hoses.  
 2. If use with spiral hose, hose fitting series number is 87342-xx-xx



**87391**

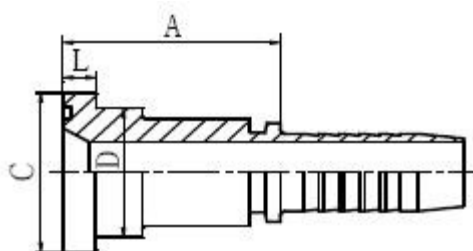
90° SAE 法兰 3000 PSI

90° SAE FLANGE 3000 PSI

代号 P/N	法兰型号 FLANGE SIZE	软管 HOSE BORE		尺寸 DIMENSIONS				
		公称内径 DN	标号 DASH	A	C	D	H	L
87391-08-08	1/2"	12	08	41	30.2	24	47	6.73
87391-12-08	3/4"	12	08	41	38.1	32	48	6.73
87391-12-12	3/4"	20	12	66.2	38.1	32	62	6.73
87391-12-16	3/4"	25	16	76.7	38.1	32	67.5	6.73
87391-16-12	1"	20	12	66.2	44.4	38	62	8
87391-16-16	1"	25	16	78	44.4	38	67.5	8
87391-20-16	1.1/4"	25	16	78	50.8	43	67.5	8
87391-20-20	1.1/4"	32	20	91.5	50.8	43	78.5	8
87391-20-24	1.1/4"	40	24	108.5	50.8	43	78.5	8
87391-24-20	1.1/2"	32	20	91.5	60.3	50	80.5	8
87391-24-24	1.1/2"	40	24	109.4	60.3	50	94	8
87391-32-24	2"	40	24	109.4	71.4	62	94	9.53
87391-32-32	2"	50	32	131.8	71.4	62	114.3	9.53
87391-40-32	2.1/2"	50	32	131.8	84.1	74.4	114.3	9.53

Note: 1. For use with braided hoses.

2. If use with spiral hose, hose fitting series number is 87392-xx-xx



**87611**

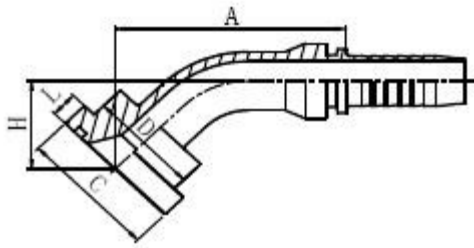
9SAE 法兰 6000 PSI

SAE FLANGE 6000 PSI

代号 P/N	法兰型号 FLANGE SIZE	软管 HOSE BORE		尺寸 DIMENSIONS			
		公称内径 DN	标号 DASH	A	C	D	L
87611-08-08	1/2"	12	08	47	31.7	24	7.75
87611-12-12	3/4"	20	12	51	41.3	32	8.76
87611-16-12	1"	20	12	56	47.6	38	9.53
87611-16-16	1"	25	16	57	47.6	38	9.53
87611-16-20	1"	32	20	61	47.6	38	9.53
87611-20-16	1.1/4"	25	16	65	54	44	10.29
87611-20-20	1.1/4"	32	20	66	54	44	10.29
87611-24-20	1.1/2"	32	20	75	63.5	51	12.57
87611-24-24	1.1/2"	40	24	75	63.5	51	12.57
87611-32-24	2"	40	24	85	79.4	67	12.57
87611-32-32	2"	50	32	85	79.4	67	12.57

Note: 1. For use with braided hoses.

2. If use with spiral hose, hose fitting series number is 87612-xx-xx



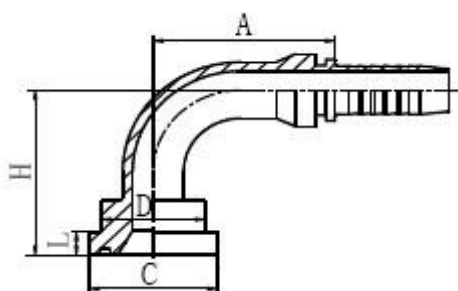
**87641**

45° SAE 法兰 3000 PSI

45° SAE FLANGE 3000 PSI

代号 P/N	法兰型号 FLANGE SIZE	软管 HOSE BORE		尺寸 DIMENSIONS				
		公称内径 DN	标号 DASH	A	C	D	H	L
87641-08-08	1/2"	12	08	58.9	31.7	23.9	24	7.9
87641-08-12	1/2"	20	12	74.9	31.7	23.9	27.5	7.9
87641-12-12	3/4"	20	12	79.2	41.3	31.7	31.8	8.9
87641-16-16	1"	25	16	90.2	47.6	38	34.7	9.6
87641-20-20	1.1/4"	32	20	103.8	54	43.6	41.5	10.4
87641-24-20	1.1/2"	32	20	105.8	63.5	50.8	45.1	12.7
87641-24-24	1.1/2"	40	24	116.2	63.5	50.8	45.5	12.7
87641-32-24	2"	40	24	125.4	79.4	67	54.7	12.57
87641-32-32	2"	50	32	135.7	79.4	66.5	52.7	12.7

Note: 1. For use with braided hoses.  
2. If use with spiral hose, hose fitting series number is 87642-××-××



## 87691

90° SAE 法兰 3000 PSI

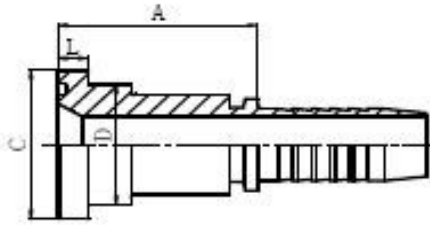
90° SAE FLANGE 3000 PSI

代号 P/N	法兰型号 FLANGE SIZE	软管 HOSE BORE		尺寸 DIMENSIONS				
		公称内径 DN	标号 DASH	A	C	D	H	L
87691-08-08	1/2"	12	08	41	31.7	24	48	7.75
87691-12-12	3/4"	20	12	66.2	41.3	32	66	8.76
87691-16-12	1"	20	12	66.2	47.6	38	69	9.53
87691-16-16	1"	25	16	78	47.6	38	74.5	9.53
87691-16-20	1"	32	20	91.5	47.6	38	85.5	9.53
87691-20-16	1.1/4"	25	16	78	54	44	78.5	10.29
87691-20-20	1.1/4"	32	20	91.5	54	44	89.5	10.29
87691-24-20	1.1/2"	32	20	91.5	63.5	51	94.5	12.57
87691-24-24	1.1/2"	40	24	109.4	63.5	51	108	12.57
87691-32-24	2"	40	24	109.4	79.4	67	116	12.57
87691-32-32	2"	50	32	131.8	79.4	67	136.3	12.57

Note: 1. For use with braided hoses.

2. If use with spiral hose, hose fitting series number is 87692-xx-xx



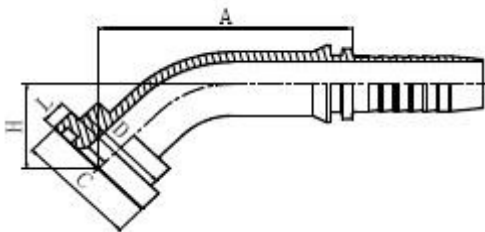


**88111 日制法兰**

**JIS FLANGE**

代号 P/N	法兰型号 FLANGE SIZE	软管 HOSE BORE		尺寸 DIMENSIONS			
		公称内径 DN	标号 DASH	A	C	D	L
88111-10-10	5/8"	16	10	46	34.2	27.8	6.7

Note: 1. For use with braided hoses.  
 2. If use with spiral hose, hose fitting series number is 88112-xx-xx



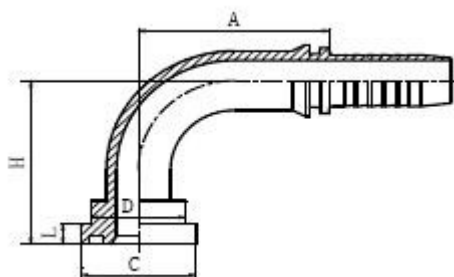
**88141**

**45° 日制法兰**

**45° JIS FLANGE**

代号 P/N	法兰型号 FLANGE SIZE	软管 HOSE BORE		尺寸 DIMENSIONS				
		公称内径 DN	标号 DASH	A	C	D	H	L
88141-10-10	5/8"	16	10	70.1	34.2	27.8	25.3	6.7

Note: 1. For use with braided hoses.  
 2. If use with spiral hose, hose fitting series number is 88142-xx-xx



**88191**

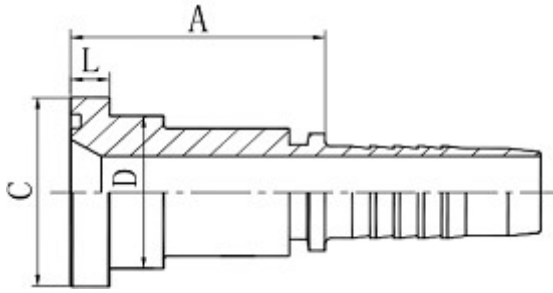
90° 日制法兰

90° JIS FLANGE

代号 P/N	法兰型号 FLANGE SIZE	软管 HOSE BORE		尺寸 DIMENSIONS				
		公称内径 DN	标号 DASH	A	C	D	H	L
88141-10-10	5/8"	16	10	70.1	34.2	27.8	25.3	6.7

Note: 1. For use with braided hoses.

2. If use with spiral hose, hose fitting series number is 88142-xx-xx

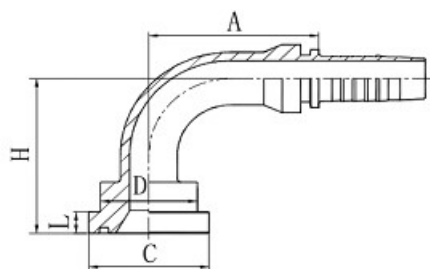


**87913**

SAE 法兰 9000 PSI interlock fitting

SAE FLANGE 9000PSI

P/N	FLANGE SIZE	HOSE BORE		DIMENSIONS			
		DN	DASH	A	C	D	L
87913-12-12	3/4"	20	12	57.8	41.3	32	14.3
87913-16-12	1"	20	12	62.3	47.6	38	14.3
87913-16-16	1"	25	16	63	47.6	38	14.3
87913-20-16	1.1/4"	25	16	70	54	44	14.3
87913-20-20	1.1/4"	32	20	70.5	54	44	14.3
87913-24-20	1.1/2"	32	20	77	63.5	51	14.3
87913-24-24	1.1/2"	40	24	77	63.5	51	14.3

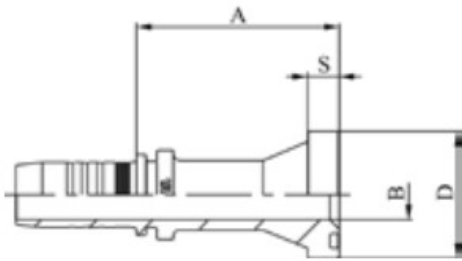


**87993**

45° SAE 法兰 9000 PSI interlock fitting

45° SAE FLANGE 9000PSI

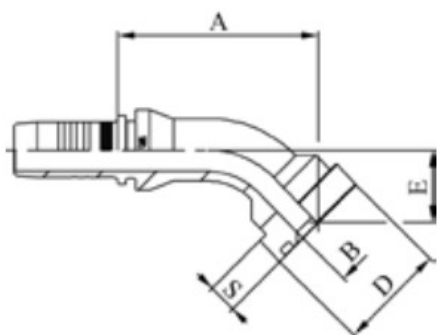
P/N	FLANGE SIZE	HOSE BORE		DIMENSIONS				
		DN	DASH	A	C	D	H	L
87993-12-12	3/4"	20	12	67.5	41.3	32	71.5	14.3
87993-16-12	1"	20	12	67.5	47.6	38	73	14.3
87993-16-16	1"	25	16	79	47.6	38	78.5	14.3
87993-20-20	1.1/4"	32	20	93.5	54	44	90.5	14.3
87993-24-20	1.1/2"	32	20	93.5	63.5	51	91.5	14.3
87993-24-24	1.1/2"	40	24	109.4	63.5	51	105	14.3



M23911

**STRAIGHT SUPERCAT FLANGE**

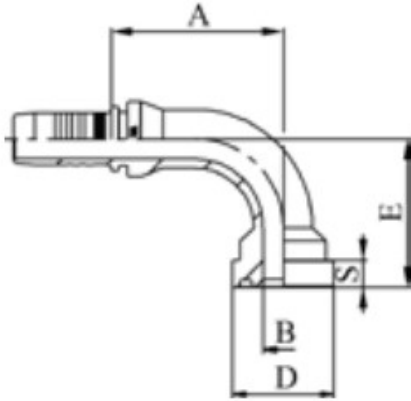
P/N	HOSE BORE			Flange	Demensions (mm)			
	DN	Dash	Inch	Inch	B	A	D	S
M23911-12-12	19	-12	3/4"	3/4"	15	74.5	41.5	14.3
M23911-12-16	19	-12	3/4"	1"	19.8	83.5	47.7	14.3
M23911-16-16	25	-16	1"	1"	19.8	87	47.7	14.3
M23911-16-20	25	-16	1"	1.1/4"	26	92.5	54	14.3
M23911-20-20	31	-20	1.1/4"	1.1/4"	26	86	54	14.3
M23911-24-24	38	-24	1.1/2"	1.1/2"	32	94	63.6	14.3



**MA23941**

**45° SUPERCAT FLANGE**

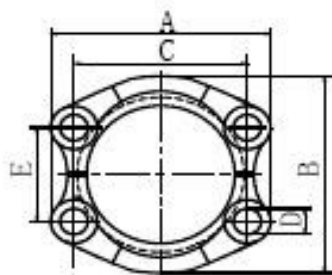
P/N	HOSE BORE			Flange	Demensions (mm)				
	DN	Dash	Inch		Inch	B	A	D	S
M23941-12-12	19	-12	3/4"	3/4"	15	77	41.5	14.3	32
M23941-16-16	25	-16	1"	1"	19.8	89.5	47.7	14.3	36.5
M23941-16-20	25	-16	1"	1.1/4"	26	92.5	54	14.3	40.5
M23941-20-20	31	-20	1.1/4"	1.1/4"	26	99	54	14.3	41.5
M23941-24-24	38	-24	1.1/2"	1.1/2"	32	119	63.6	14.3	45.5



**MA23991**

**90° SUPERCAT FLANGE**

P/N	HOSE BORE			Flange Inch	Demensions (mm)				
	DN	Dash	Inch		B	A	D	S	E
M23991-12-12	19	-12	3/4"	3/4"	15	64.5	41.5	14.3	64.5
M23991-16-16	25	-16	1"	1"	19.8	77.5	47.7	14.3	76.5
M23991-16-20	25	-16	1"	1.1/4"	26	77.5	54	14.3	80.5
M23991-20-20	31	-20	1.1/4"	1.1/4"	26	85.5	54	14.3	87.0
M23991-20-24	31	-20	1.1/4"	1.1/2"	32	85.5	63.7	14.3	93



**FL**

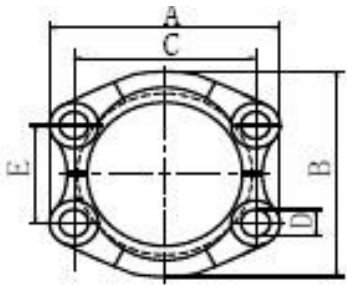
SAE 对开法兰夹 3000PSI

SAE SPLIT FLANGE CLAMP 3000PSI

ISO 6162—SAE J518

代号 P/N	法兰型号 FLANGE SIZE	尺寸 DIMENSIONS					螺栓 BOLT	压力等级
		A	B	C	D	E		
FL-08	1/2"	53.8	46.1	38.1	9	17.5	M8×25	34.5
FL-12	3/4"	65	52.4	47.6	11	22.2	M10×30	
FL-16	1"	69.9	58.7	52.4	11	26.2	M10×30	
FL-20	1.1/4"	79.2	73	58.7	11	30.2	M10×30	27.6
FL-24	1.1/2"	93.7	82.6	69.9	13.5	35.7	M12×35	20.7
FL-32	2"	101.6	96.8	77.8	13.5	42.9	M12×35	
NOTE: BOLT SHOULD BE ORDERED ANOTHER								





FS

SAE 对开法兰夹 6000PSI

SAE SPLIT FLANGE CLAMP 6000PSI

ISO 6162—SAE J518

代号 P/N	法兰型号 FLANGE SIZE	尺寸 DIMENSIONS					螺栓 BOLT	压力等级
		A	B	C	D	E		
FS-08	1/2"	56.3	49.2	40.5	9	18.2	M8×30	42
FS-12	3/4"	71.4	61.8	50.8	11	23.8	M10×35	
FS-16	1"	81	71.4	57.2	13	27.8	M12×45	
FS-20	1.1/4"	95.3	79.2	66.7	15	31.8	M14×50	
FS-24	1.1/2"	112.8	96.8	79.4	17	36.6	M16×55	
FS-32	2"	133.4	115.6	96.8	21	44.4	M20×70	
NOTE: BOLT SHOULD BE ORDERED ANOTHER								

## NOTES

The drawings in this catalogue are for reference only, and their dimensions and proportions may be a little different from those of the real products.

Products included in this catalogue don't refer to all, so if customers are interested in other products, please don't hesitate to contact our company for further information.

Our company has made much effort to record the correct data in this publication. However, in order to promote our products, we may make some changes of their size or description, which haven't been shown yet. We reserve the rights for explanation, but sorry for no further notice to customer the change of products' design, description or even stop of some products' manufacture in future.