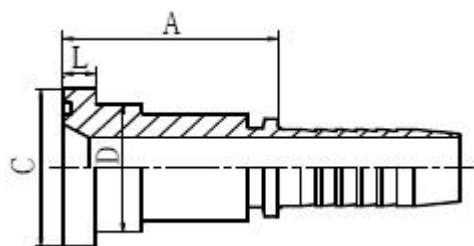


INDEX

P/N	PAGE
87311(SAE FLANGE 3000 PSI).....	2
87341(45°SAE FLANGE 3000 PSI).....	3
87391(90°SAE FLANGE 3000 PSI).....	4
87611(SAE FLANGE 6000 PSI).....	5
87641(45°SAE FLANGE 63000 PSI).....	6
87691(90°SAE FLANGE 6000 PSI).....	7
88111(JIS FLANGE).....	8
88141(45°JIS FLANGE).....	8
88191(90°JIS FLANGE).....	8
FL(SAE SPLIT FLANGE CLAMP 3000PSI).....	9
FS(SAE SPLIT FLANGE CLAMP 6000PSI).....	9



87311

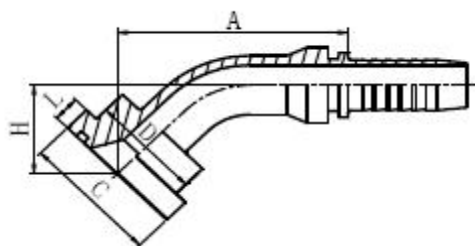
SAE 法兰 3000 PSI

SAE FLANGE 3000 PSI

代号 P/N	法兰型号 FLANGE SIZE	软管 HOSE BORE		尺寸 DIMENSIONS			
		公称内径 DN	标号 DASH	A	C	D	L
87311-08-08	1/2"	12	08	46	30.2	24	6.73
87311-12-08	3/4"	12	08	47	38.1	32	6.73
87311-12-10	3/4"	16	10	48	38.1	32	6.73
87311-12-12	3/4"	20	12	48	38.1	32	6.73
87311-12-16	3/4"	25	16	49	38.1	32	6.73
87311-16-12	1"	20	12	51	44.4	38	8
87311-16-16	1"	25	16	52	44.4	38	8
87311-16-20	1"	32	20	53	44.4	38	8
87311-20-16	1.1/4"	25	16	57	50.8	43	8
87311-20-20	1.1/4"	32	20	58	50.8	43	8
87311-24-20	1.1/2"	32	20	68	60.3	50	8
87311-24-24	1.1/2"	40	24	68	60.3	50	8
87311-32-24	2"	40	24	70	71.4	62	9.53
87311-32-32	2"	50	32	70	71.4	62	9.53
87311-32-40	2"	64	40	75	71.4	62	9.53
87311-40-32	2.1/2"	50	32	73	84.1	74	9.53
87311-40-40	2.1/2"	64	40	76	84.1	74	9.53

Note: 1. For use with braided hoses.

2. If use with spiral hose, hose fitting series number is 87312-xx-xx



87341

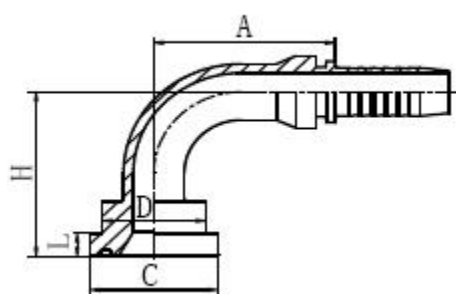
45° SAE 法兰 3000 PSI

45° SAE FLANGE 3000 PSI

代号 P/N	法兰型号 FLANGE SIZE	软管 HOSE BORE		尺寸 DIMENSIONS				
		公称内径 DN	标号 DASH	A	C	D	H	L
87341-08-08	1/2"	12	08	58.2	30.2	24	23.3	6.73
87341-12-08	3/4"	12	08	58.9	38.1	32	24	6.73
87341-12-12	3/4"	20	12	77	38.1	32	28.9	6.73
87341-16-12	1"	20	12	77	44.4	38	28.9	8
87341-16-16	1"	25	16	85.2	44.4	38	29.7	8
87341-16-20	1"	32	20	94.5	44.4	38	33.8	8
87341-20-16	1.1/4"	25	16	85.2	50.8	43	29.7	8
87341-20-20	1.1/4"	32	20	94.5	50.8	43	33.8	8
87341-24-20	1.1/2"	32	20	95.9	60.3	50	35.2	8
87341-24-24	1.1/2"	40	24	109.9	60.3	50	39.1	8
87341-32-24	2"	40	24	109.9	71.4	62	39.1	9.53
87341-32-32	2"	50	32	129.3	71.4	62	46.3	9.53

Note: 1. For use with braided hoses.

2. If use with spiral hose, hose fitting series number is 87342-xx-xx



87391

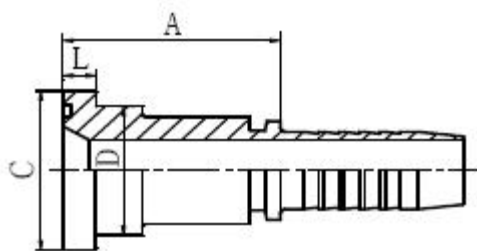
90° SAE 法兰 3000 PSI

90° SAE FLANGE 3000 PSI

代号 P/N	法兰型号 FLANGE SIZE	软管 HOSE BORE		尺寸 DIMENSIONS				
		公称内径 DN	标号 DASH	A	C	D	H	L
87391-08-08	1/2"	12	08	41	30.2	24	47	6.73
87391-12-08	3/4"	12	08	41	38.1	32	48	6.73
87391-12-12	3/4"	20	12	66.2	38.1	32	62	6.73
87391-12-16	3/4"	25	16	76.7	38.1	32	67.5	6.73
87391-16-12	1"	20	12	66.2	44.4	38	62	8
87391-16-16	1"	25	16	78	44.4	38	67.5	8
87391-16-20	1"	32	20	91.5	44.4	38	78.5	8
87391-20-16	1.1/4"	25	16	78	50.8	43	67.5	8
87391-20-20	1.1/4"	32	20	91.5	50.8	43	78.5	8
87391-20-24	1.1/4"	40	24	108.5	50.8	43	78.5	8
87391-24-20	1.1/2"	32	20	91.5	60.3	50	80.5	8
87391-24-24	1.1/2"	40	24	109.4	60.3	50	94	8
87391-32-24	2"	40	24	109.4	71.4	62	94	9.53
87391-32-32	2"	50	32	131.8	71.4	62	114.3	9.53
87391-40-32	2.1/2"	50	32	131.8	84.1	74.4	114.3	9.53

Note: 1. For use with braided hoses.

2. If use with spiral hose, hose fitting series number is 87392-xx-xx



87611

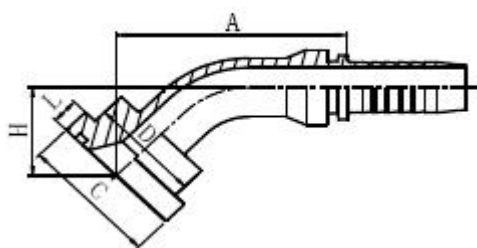
9SAE 法兰 6000 PSI

SAE FLANGE 6000 PSI

代号 P/N	法兰型号 FLANGE SIZE	软管 HOSE BORE		尺寸 DIMENSIONS			
		公称内径 DN	标号 DASH	A	C	D	L
87611-08-08	1/2"	12	08	47	31.7	24	7.75
87611-12-12	3/4"	20	12	51	41.3	32	8.76
87611-16-12	1"	20	12	56	47.6	38	9.53
87611-16-16	1"	25	16	57	47.6	38	9.53
87611-16-20	1"	32	20	61	47.6	38	9.53
87611-20-16	1.1/4"	25	16	65	54	44	10.29
87611-20-20	1.1/4"	32	20	66	54	44	10.29
87611-24-20	1.1/2"	32	20	75	63.5	51	12.57
87611-24-24	1.1/2"	40	24	75	63.5	51	12.57
87611-32-24	2"	40	24	85	79.4	67	12.57
87611-32-32	2"	50	32	85	79.4	67	12.57

Note: 1. For use with braided hoses.

2. If use with spiral hose, hose fitting series number is 87612-x x-x x



87641

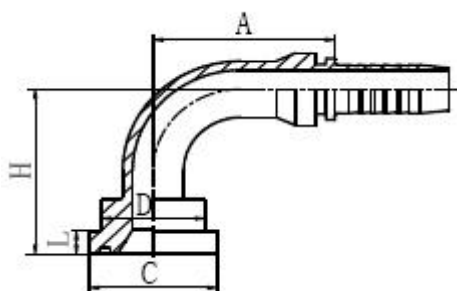
45° SAE 法兰 3000 PSI

45° SAE FLANGE 3000 PSI

代号 P/N	法兰型号 FLANGE SIZE	软管 HOSE BORE		尺寸 DIMENSIONS				
		公称内径 DN	标号 DASH	A	C	D	H	L
87641-08-08	1/2"	12	08	58.9	31.7	23.9	24	7.9
87641-08-12	1/2"	20	12	74.9	31.7	23.9	27.5	7.9
87641-12-12	3/4"	20	12	79.2	41.3	31.7	31.8	8.9
87641-16-16	1"	25	16	90.2	47.6	38	34.7	9.6
87641-20-20	1.1/4"	32	20	103.8	54	43.6	41.5	10.4
87641-24-20	1.1/2"	32	20	105.8	63.5	50.8	45.1	12.7
87641-24-24	1.1/2"	40	24	116.2	63.5	50.8	45.5	12.7
87641-32-24	2"	40	24	125.4	79.4	67	54.7	12.57
87641-32-32	2"	50	32	135.7	79.4	66.5	52.7	12.7

Note: 1. For use with braided hoses.

2. If use with spiral hose, hose fitting series number is 87642-xx-xx



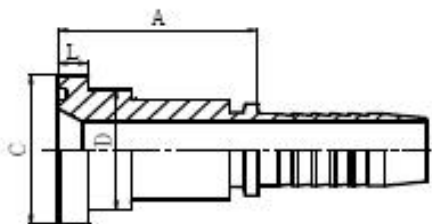
87691

90° SAE 法兰 3000 PSI

90° SAE FLANGE 3000 PSI

代号 P/N	法兰型号 FLANGE SIZE	软管 HOSE BORE		尺寸 DIMENSIONS				
		公称内径 DN	标号 DASH	A	C	D	H	L
87691-08-08	1/2"	12	08	41	31.7	24	48	7.75
87691-12-12	3/4"	20	12	66.2	41.3	32	66	8.76
87691-16-12	1"	20	12	66.2	47.6	38	69	9.53
87691-16-16	1"	25	16	78	47.6	38	74.5	9.53
87691-16-20	1"	32	20	91.5	47.6	38	85.5	9.53
87691-20-16	1.1/4"	25	16	78	54	44	78.5	10.29
87691-20-20	1.1/4"	32	20	91.5	54	44	89.5	10.29
87691-24-20	1.1/2"	32	20	91.5	63.5	51	94.5	12.57
87691-24-24	1.1/2"	40	24	109.4	63.5	51	108	12.57
87691-32-24	2"	40	24	109.4	79.4	67	116	12.57
87691-32-32	2"	50	32	131.8	79.4	67	136.3	12.57

Note: 1. For use with braided hoses.
2. If use with spiral hose, hose fitting series number is 87692-x-x-x-x



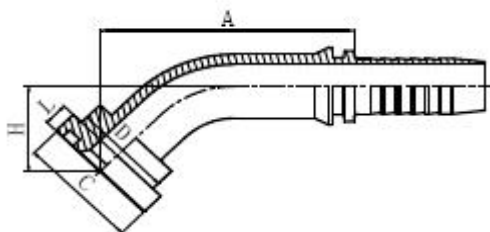
88111

日制法兰

JIS FLANGE

代号 P/N	法兰型号 FLANGE SIZE	软管 HOSE BORE		尺寸 DIMENSIONS			
		公称内径 DN	标号 DASH	A	C	D	L
88111-10-10	5/8 "	16	10	46	34.2	27.8	6.7

Note: 1. For use with braided hoses.
2. If use with spiral hose, hose fitting series number is 88112-xx-xx



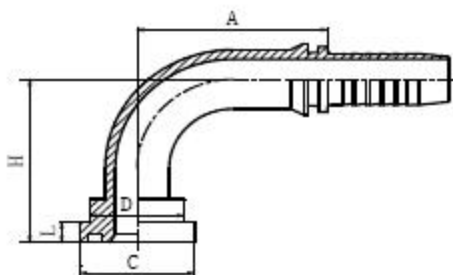
88141

45° 日制法兰

45° JIS FLANGE

代号 P/N	法兰型号 FLANGE SIZE	软管 HOSE BORE		尺寸 DIMENSIONS				
		公称内径 DN	标号 DASH	A	C	D	H	L
88141-10-10	5/8"	16	10	70.1	34.2	27.8	25.3	6.7

Note: 1. For use with braided hoses.
2. If use with spiral hose, hose fitting series number is 88142-xx-xx



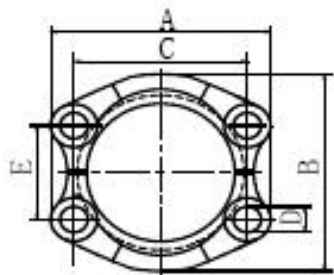
88191

90° 日制法兰

90° JIS FLANGE

代号 P/N	法兰型号 FLANGE SIZE	软管 HOSE BORE		尺寸 DIMENSIONS				
		公称内径 DN	标号 DASH	A	C	D	H	L
88141-10-10	5/8"	16	10	70.1	34.2	27.8	25.3	6.7

Note: 1. For use with braided hoses.
2. If use with spiral hose, hose fitting series number is 88142-xx-xx



FL

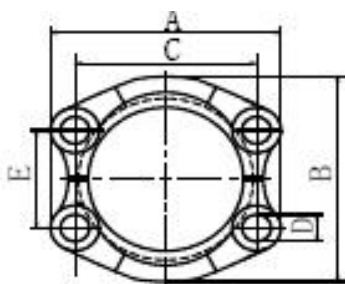
SAE 对开法兰夹 3000PSI

SAE SPLIT FLANGE CLAMP 3000PSI

ISO 6162—SAE J518

代号 P/N	法兰型号 FLANGE SIZE	尺寸 DIMENSIONS					螺栓 BOLT	压力等级
		A	B	C	D	E		
FL-08	1/2"	53.8	46.1	38.1	9	17.5	M8×25	34.5
FL-12	3/4"	65	52.4	47.6	11	22.2	M10×30	
FL-16	1"	69.9	58.7	52.4	11	26.2	M10×30	
FL-20	1.1/4"	79.2	73	58.7	11	30.2	M10×30	27.6
FL-24	1.1/2 "	93.7	82.6	69.9	13.5	35.7	M12×35	20.7
FL-32	2"	101.6	96.8	77.8	13.5	42.9	M12×35	

NOTE: BOLT SHOULD BE ORDERED ANOTHER



FS

SAE 对开法兰夹 6000PSI

SAE SPLIT FLANGE CLAMP 6000PSI

ISO 6162—SAE J518

代号 P/N	法兰型号 FLANGE SIZE	尺寸 DIMENSIONS					螺栓 BOLT	压力等级
		A	B	C	D	E		
FS-08	1/2"	56.3	49.2	40.5	9	18.2	M8×30	42
FS-12	3/4"	71.4	61.8	50.8	11	23.8	M10×35	
FS-16	1"	81	71.4	57.2	13	27.8	M12×45	
FS-20	1.1/4"	95.3	79.2	66.7	15	31.8	M14×50	
FS-24	1.1/2 "	112.8	96.8	79.4	17	36.6	M16×55	
FS-32	2"	133.4	115.6	96.8	21	44.4	M20×70	

NOTE: BOLT SHOULD BE ORDERED ANOTHER

NOTES

The drawings in this catalogue are for reference only, and their dimensions and proportions may be a little different from those of the real products.

Products included in this catalogue don't refer to all, so if customers are interested in other products, please don't hesitate to contact our company for further information.

Our company has made much effort to record the correct data in this publication. However, in order to promote our products, we may make some changes of their size or description, which haven't been shown yet. We reserve the rights for explanation, but sorry for no further notice to customer the change of products' design, description or even stop of some products' manufacture in future.